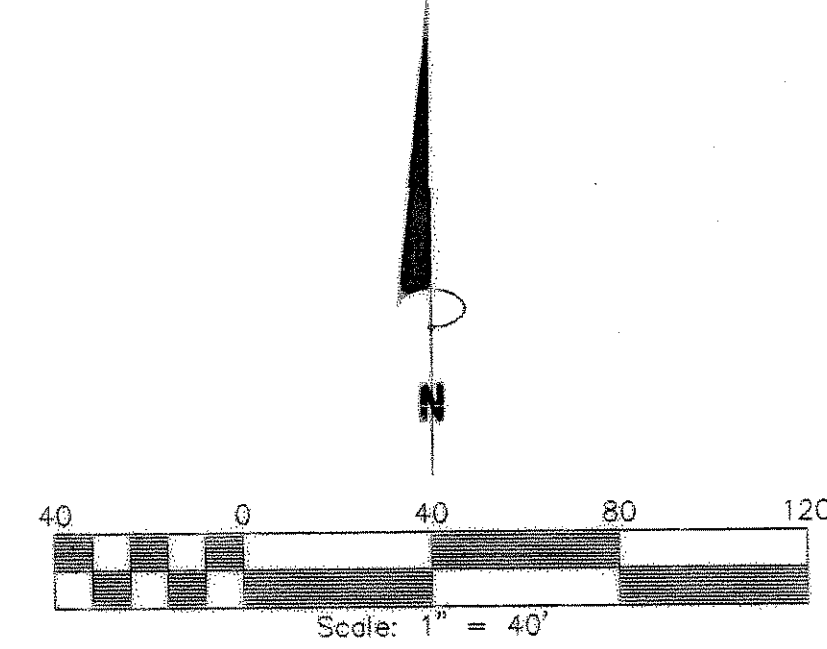


BELLE HAVEN ESTATES SUBDIVISION FILING NO. 2

BEING A PORTION OF LOT 1 OF SUNNYSIDE ACRES SUBDIVISION
 LOCATED IN THE W¹/₂NW¹/₄ OF SECTION 36
 TOWNSHIP 49 NORTH, RANGE 9 WEST, N.M.P.M.
 CITY OF MONTROSE, MONTROSE COUNTY, COLORADO



CURVE TABLE

NUMBER	RADIUS	DELTA ANGLE	ARC LENGTH	TANGENT	CHORD DIRECTION	CHORD LENGTH
C1	325.00	01°17'17"	7.31	3.65	N8°00'06"E	7.31
C2	325.00	12°14'07"	69.40	34.83	N8°45'48"E	69.27
C3	20.00	91°31'18"	31.95	20.54	N47°07'13"E	28.66
C4	275.00	04°54'29"	23.56	11.79	N81°48'41"E	23.55
C5	275.00	08°36'55"	41.35	20.71	N88°34'23"E	41.31
C6	20.00	88°28'41"	30.88	19.48	S42°52'48"E	27.91
C7	100.00	81°06'06"	141.55	85.56	S41°54'36"W	130.02
C8	100.00	32°11'37"	56.19	28.86	N81°26'33"W	55.45
C9	100.00	65°08'35"	113.70	63.88	N32°46'27"W	107.67
C10	150.00	32°11'37"	84.28	43.29	S81°26'33"E	83.18
C11	150.00	40°43'08"	106.60	55.66	N62°06'05"E	104.37
C12	150.00	25°22'25"	66.43	33.77	N29°03'19"E	65.89
C13	125.00	32°11'37"	70.24	36.07	N81°26'33"W	69.32
C14	325.00	13°31'24"	76.71	38.53	N86°07'09"E	76.53
C15	300.00	13°31'24"	70.81	35.57	N86°07'09"E	70.64
C16	275.00	13°31'24"	64.91	32.61	N86°07'09"E	64.76
C17	150.00	81°06'06"	212.32	126.34	N41°54'36"E	195.04
C18	150.00	15°00'33"	39.29	19.76	N08°51'50"E	39.18
C19	32.00	32°07'08"	17.94	9.21	S52°58'37"E	17.70
C20	40.00	147°42'43"	103.12	138.18	N09°02'44"W	76.85

LINE TABLE FOR U.V.W.U.A. EASEMENT

NUMBER	DIRECTION	DISTANCE
L1	S00°13'00"E	9.92'
L2	S03°35'19"W	59.83'
L3	S04°19'27"W	215.63'
L4	S02°32'13"W	93.77'
L5	S00°19'31"E	201.55'
L6	S03°40'45"W	12.47'
L7	S58°53'03"W	15.12'
L8	S82°59'41"W	181.35'
L9	S82°07'16"W	200.15'
L10	S82°34'46"W	231.74'
L11	S85°38'48"W	41.84'

LINE TABLE FOR CITY WATER EASEMENT

NUMBER	DIRECTION	DISTANCE
L12	S79°43'53"W	34.66'
L13	N87°52'10"W	34.64'
L14	S79°43'49"W	55.51'
L15	N48°10'28"W	110.84'
L16	N41°59'37"E	40.56'
L17	N01°26'54"E	222.09'
L18	N87°02'08"W	267.93'
L19	S79°20'03"W	150.78'
L20	N00°22'40"W	150.78'

LINE TABLE FOR LATERAL AMF RIGHT-OF-WAY

- LEGEND**
- FOUND REBAR AND 1-1/2" ALUMINUM CAP "M/LS, W.C. PLS 29416" AS WITNESS POINT TO LOT CORNER
 - FOUND REBAR AND 1-1/2" ALUMINUM CAP "M/LS PLS 29416"
 - FOUND REBAR AND 1-1/2" ALUMINUM CAP "M/LS PLS 29416" IN CONCRETE
 - SET REBAR AND 2" ALUMINUM CAP "M/LS PLS 29416"
 - SET REBAR AND 2" ALUMINUM CAP "M/LS PLS 29416" IN CONCRETE
 - ⊙ MONTROSE GIS CONTROL STATION
 - ⊙ FOUND 1-1/2" ALUMINUM CAP MARKED "DEL-MONT, LS 16840"
 - △ FOUND MONUMENT AS SHOWN
 - () RECORD INFORMATION PER SUNNYSIDE ACRES SUBDIVISION, RECEPTION NO. 672507
 - U.V.W.U.A. UNCOMPAGHRE VALLEY WATER USERS ASSOCIATION
 - (RAD) RADIAL
 - - - FENCE

BASIS OF BEARINGS
 BEARINGS ARE BASED ON THE SOUTHERLY LINE OF SUNNYSIDE ACRES SUBDIVISION AS SHOWN ON BELLE HAVEN ESTATES FILING NO. 1 (REC. NO. 717045). THE BEARING BEING S82°28'11"W AND IS ESTABLISHED BETWEEN THE MONUMENTS SHOWN HEREON.

NOTICE: According to Colorado law you must commence any legal action based upon any defect in this survey within three (3) years after you first discover such defect. In no event may any action based upon any defect in this survey be commenced more than ten (10) years from the date of the certification shown hereon.

BELLE HAVEN ESTATES SUBDIVISION FILING NO. 2
 LOCATED IN THE W¹/₂NW¹/₄ OF SECTION 36
 TOWNSHIP 49 NORTH, RANGE 9 WEST, N.M.P.M.
 CITY OF MONTROSE, MONTROSE COUNTY, COLORADO

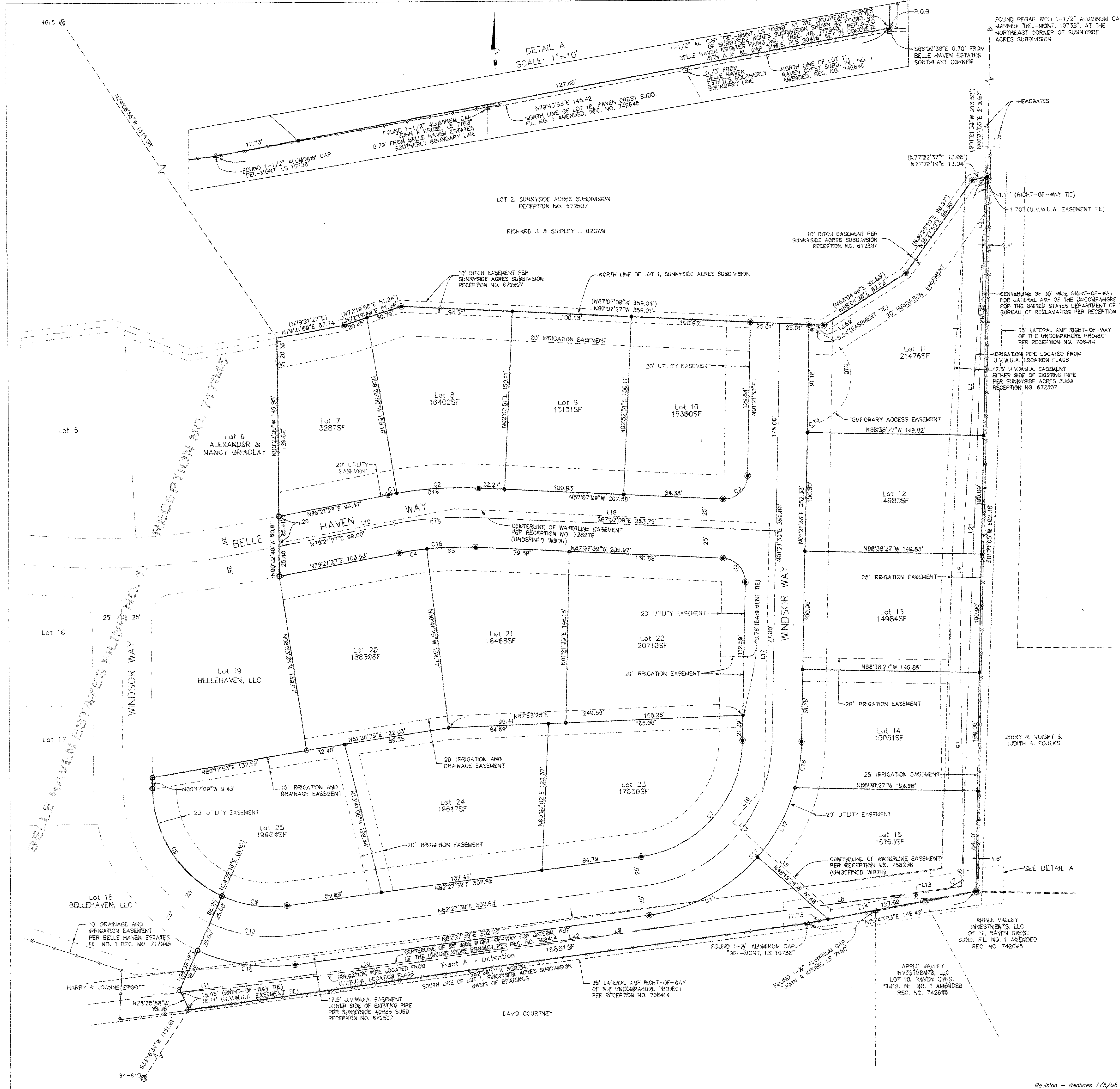
ALEXANDER GRINDLAY AND NANCY GRINDLAY
 P.O. BOX 1286
 MONTROSE, CO 81402
 (970) 240-4656

MOUNTAIN WEST LAND SURVEYING, LLC.
 PROFESSIONAL LAND SURVEYING
 CALIFORNIA - COLORADO - NEVADA
 MONTANA - WYOMING
 P.O. BOX 3207
 MONTROSE, CO 81402
 PH. 970-252-3555 FAX 970-252-1555

SHEET
 2
 of
 2
 SHEETS

Date: March 16, 2008
 Scale: 1" = 40'
 Drawn: C.C.J.
 Checked: E.C.J.
 JOB NO. 04065
 File: 04065.dwg

Revision - Redlines 7/5/06



DETAIL A
 SCALE: 1"=10'

RECEPTION NO. 717045

BELLE HAVEN ESTATES FILING NO. 1

HARRY & JOANNE EROOTT

DAVID COURTNEY

APPLE VALLEY INVESTMENTS, LLC
 LOT 11, RAVEN CREST SUBD. FILING NO. 1 AMENDED REC. NO. 742645

APPLE VALLEY INVESTMENTS, LLC
 LOT 10, RAVEN CREST SUBD. FILING NO. 1 AMENDED REC. NO. 742645

FOUND 1-1/2" ALUMINUM CAP "DEL-MONT, LS 10738"

FOUND 1-1/2" ALUMINUM CAP "JOHN A KRUISE, LS 7160"

FOUND 1-1/2" ALUMINUM CAP "DEL-MONT, LS 10738"

FOUND 1-1/2" ALUMINUM CAP "JOHN A KRUISE, LS 7160"

FOUND 1-1/2" ALUMINUM CAP "DEL-MONT, LS 10738"

FOUND 1-1/2" ALUMINUM CAP "JOHN A KRUISE, LS 7160"

FOUND 1-1/2" ALUMINUM CAP "DEL-MONT, LS 10738"

FOUND 1-1/2" ALUMINUM CAP "JOHN A KRUISE, LS 7160"

FOUND 1-1/2" ALUMINUM CAP "DEL-MONT, LS 10738"

FOUND 1-1/2" ALUMINUM CAP "JOHN A KRUISE, LS 7160"